

## Alpha 1 Preventative Maintenance

Alpha 1 Service Engineers are highly skilled individuals with many years of training and experience in the repair and maintenance of Induction Heating Equipment. Our Service Engineers are equipped with state of the art test equipment including dual channel storage oscilloscope, current probes, digital multi-function meters, high voltage insulation test equipment, water conductivity meter, thermal imaging system, optical pyrometer calibration system, computer and software. Our Preventative Maintenance Plan includes:

### Examine the cooling circuit of the system:

- Check entire system for water leaks.
- Check for proper water flow through the power components.
- Check the closed-loop water quality, drain and refill the closed-loop water system.
- Check the heat exchanger for fouling and clean if needed.
- Verify proper operation of the modulating valve.
- Clean system strainer.



Fittings Inspection

### Examine the complete electrical system:

- Inspect all electrical insulation for deterioration including wiring, buss bars, transformers, capacitors, etc.
- Inspect system for loose wires, connections and arcing.
- Check all circuit limits for proper setting.
- Install updates on printed circuit boards as applicable according to the service bulletins.
- Check for proper equipment grounding of the system.

### Clean system:

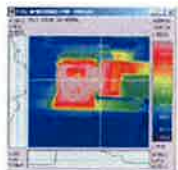
- Vacuum interior of power supply and heat station cabinet to remove dirt and dust.
- Wipe down exterior of power supply.

### Safety:

- Inspect system safety interlocks and verify proper operation.
- Check that proper guarding, shielding and labels are applied.

### Thermal Image Analysis:

- Take thermal images of all areas of the equipment and analyze.
- Address any areas showing signs of overheating such as water cooling circuits, electrical connections etc.
- Take another thermal image after the corrections are made to verify proper operation.



Thermal Imaging Service



Portable Flushing System

### Alpha 1 Induction Service Center

We specialize in the InductoTherm Group brand products Alpha 1, Inductoheat, IHS, Lepel, Newelco and Radyne.

Alpha 1 is the ONLY authorized dealer of Newelco service and spare parts in North America.

For more information, call 614-253-8900 or visit us at [www.alpha1induction.com](http://www.alpha1induction.com)

©2006 Alpha1 Induction, All Rights Reserved, BULLETIN FieldService02

